

BRIDGES

Connecting Spaces Between Design and Durability

Welspun[®]
FLOORING

SYMMETRY



TRANSITIONAL

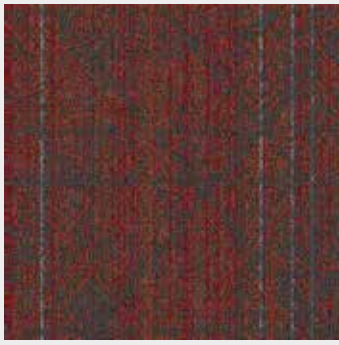


CRISS-CROSS

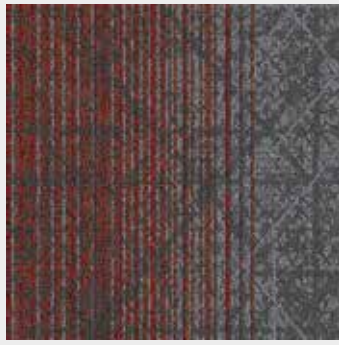


BRIDGES

The collection Bridges, refers to elements or concepts that connect or link different aspects of a design, enhancing its functionality, aesthetics, or overall cohesiveness. Bridges is the visual or stylistic gap between different parts of a design, creating a harmonious whole. For instance, a colour gradient acts as a transitional element between two contrasting colours in a design.



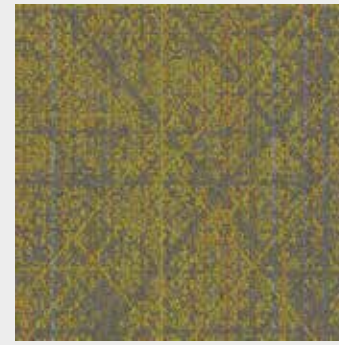
BARN
CT001749



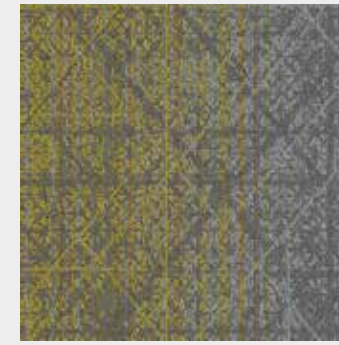
GRANITE-BARN
CT001744



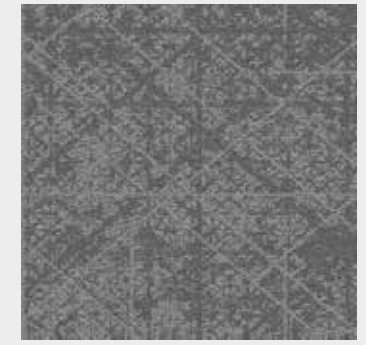
GRANITE
CT001739



MAIZE
CT001746



STONE-MAIZE
CT001741



STONE
CT001738



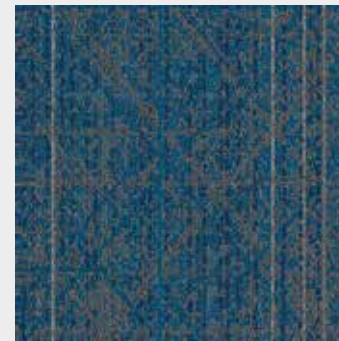
OXIDE
CT001748



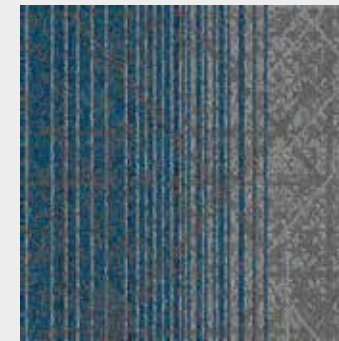
GRANITE-OXIDE
CT001743



GRANITE
CT001739



WROTH IRON
CT001751



STONE-WROTH IRON
CT001753



STONE
CT001738



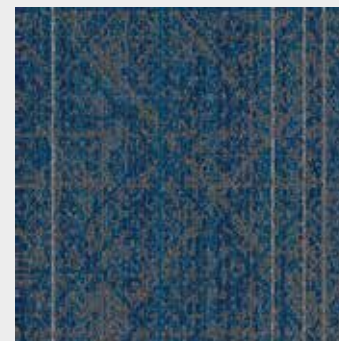
SEAFORM
CT001747



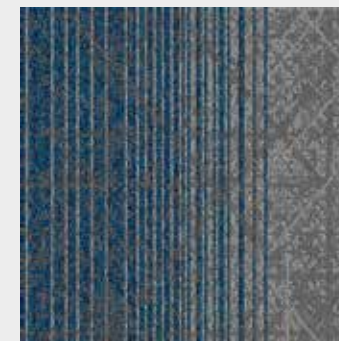
GRANITE-SEAFOAM
CT001742



GRANITE
CT001739



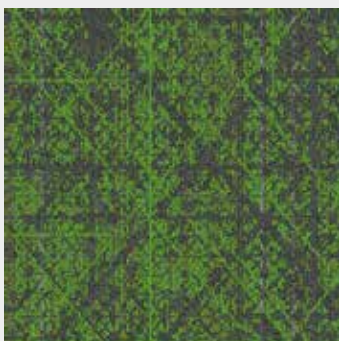
STEEL
CT001750



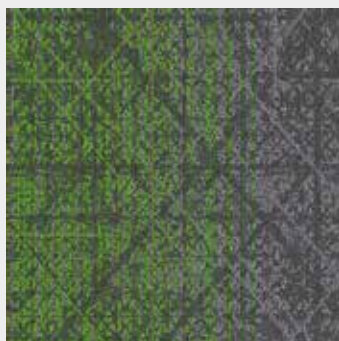
STONE-STEEL
CT001752



STONE
CT001738



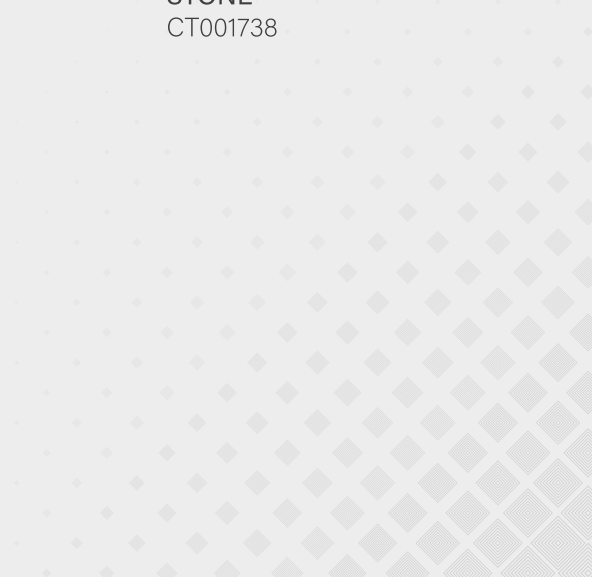
FOREST MOSS
CT001745

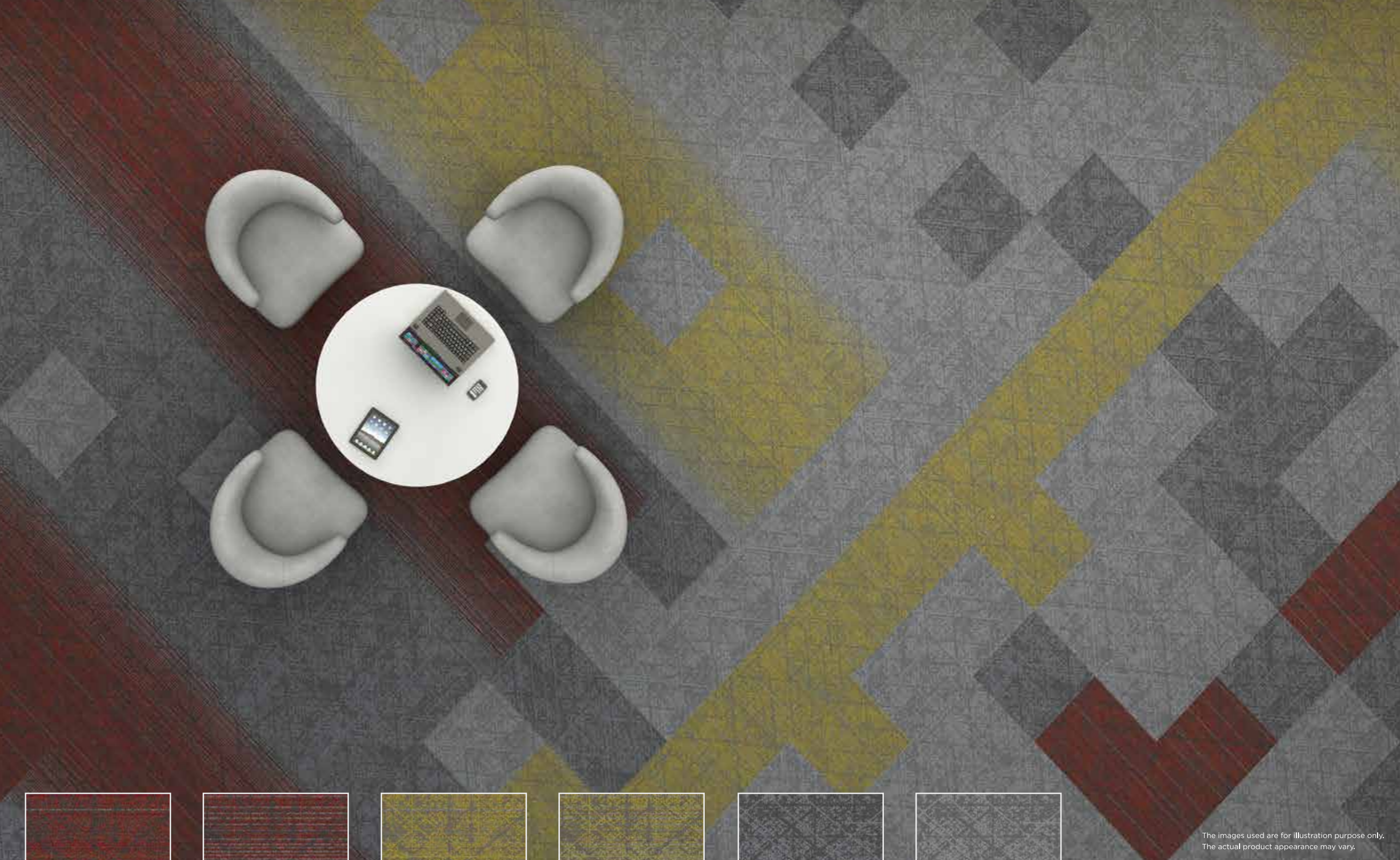


STONE-FOREST MOSS
CT001740



GRANITE
CT001739





The images used are for illustration purpose only.
The actual product appearance may vary.



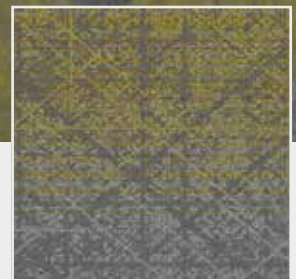
BARN
CT001749



GRANITE-BARN
CT001744



MAIZE
CT001746



STONE-MAIZE
CT001741

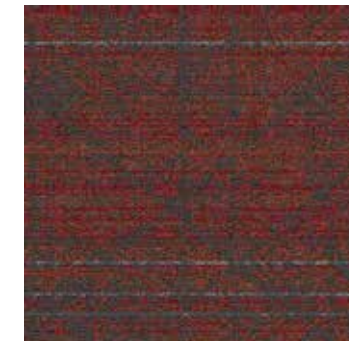


GRANITE
CT001739

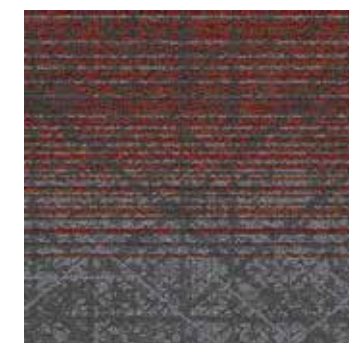


STONE
CT001738





BARN
CT001749

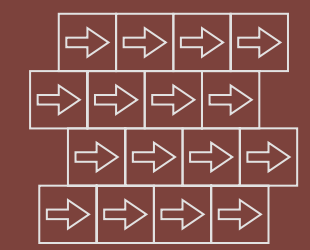


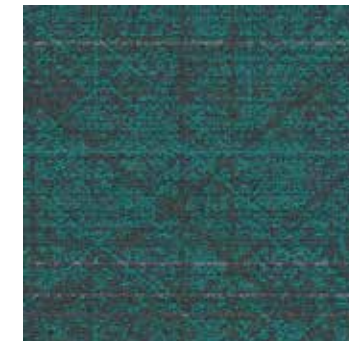
GRANITE-BARN
CT001744



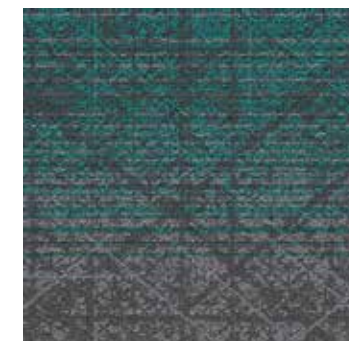
GRANITE
CT001739

ASHLAR





SEAFORM
CT001747

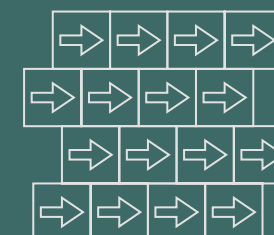


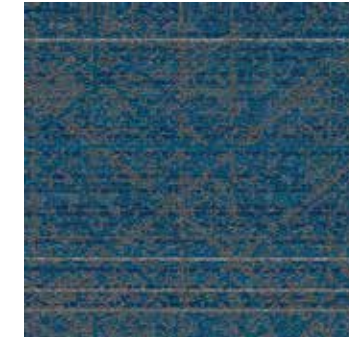
GRANITE-SEAFOAM
CT001742



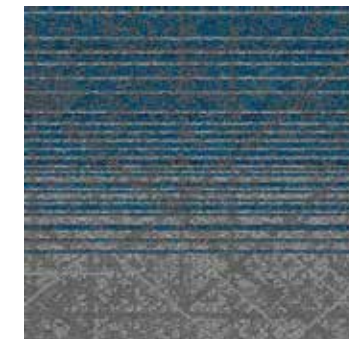
GRANITE
CT001739

ASHLAR





STONE-WROTH IRON
CT001753

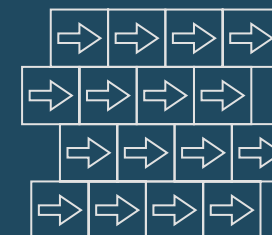


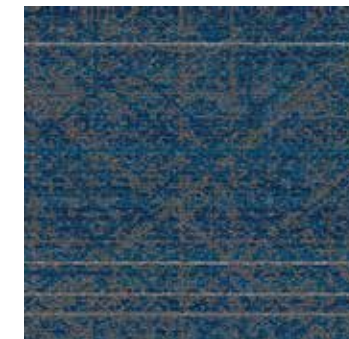
WROTH IRON
CT001751



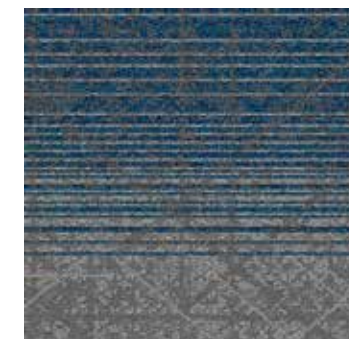
STONE
CT001738

ASHLAR





STEEL
CT001750

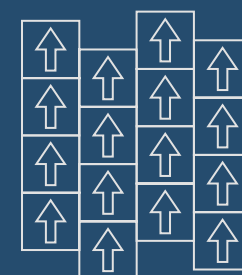


STONE-STEEL
CT001752

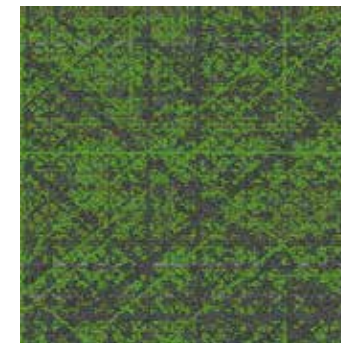


STONE
CT001738

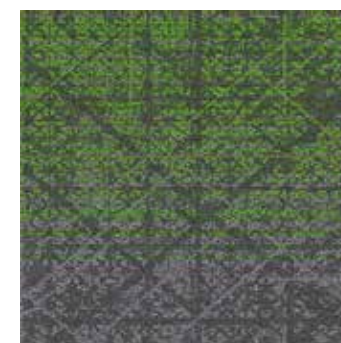
ASHLAR



The images used are for illustration purpose only. The actual product appearance may vary.



FOREST MOSS
CT001745

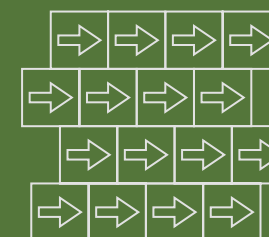


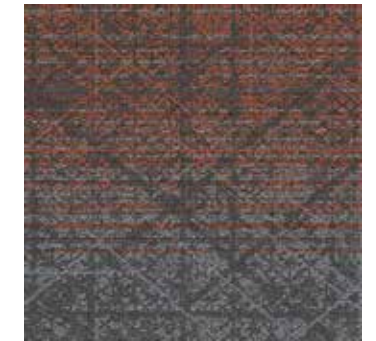
STONE-FOREST MOSS
CT001740



GRANITE
CT001739

ASHLAR



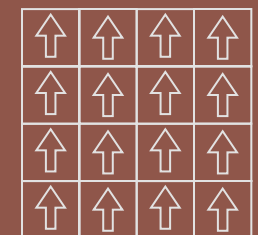


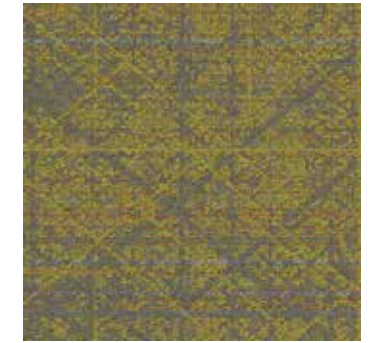
GRANITE-OXIDE
CT001743



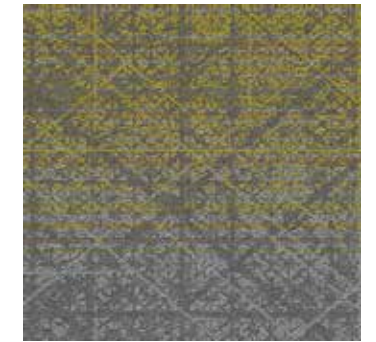
GRANITE
CT001739

MONOLITHIC





MAIZE
CT001746

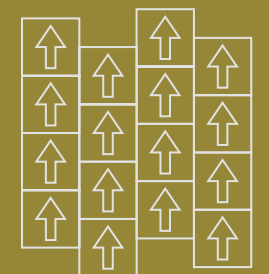


STONE-MAIZE
CT001741



STONE
CT001738

ASHILAR



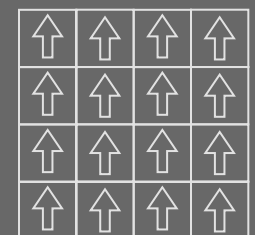


STONE
CT001738



GRANITE
CT001739

MONOLITHIC



PRODUCT SPECIFICATION

Collection Name	Bridges
Machine Gauge	1/12 loop Infinity
Yarn	Nylon 6
Size (CM)	50x50
Pile Height	3.0-4.0 mm
Total Thickness	5.0-6.0 mm
Density	5000-5400
SPI	11.5 to 12
Tufting Weight (Oz)	18
Backing System	Welspun Ecolite or Comfortile
Indicates	+/- 5%

TEST REPORT SUMMARY

Test Name	Method	Test Name	Method
Anti Microbial Treatment	AATCC 174 (Part II & III)	Colour fastness to bleach	AATCC 6
Delamination	ASTM D 3936	Static Electricity	AATCC 134-1996
Tuft Bind	ASTM 1335-67	Anti Static	ANSI/ESD S 7.1
Dimensional stability	ASTM D 7570	Castor Chair	DIN 54324
Pile weight	ASTM D 5848-07	Hexapod	ASTM D 5252-15
Pile density	ASTM D 5848-07	Static Coefficient	ASTM C 1028
Total thickness	ASTM D 6988-08	Dimensional stability (Aachen test)	DIN-STD-54318/ITTS-004
Pile height	ASTM D 5823-05a	Anti Soil	ASTM D 6540-05
Gauge	ASTM D 5793-13	Shampoo Fastness	AATCC 138
Tuft density	ASTM D 5848	Water Fastness	AATCC 107
Flammability (Pill Test)	ASTM D 2859	Velcro-Loops	ITTS 112
Flammability (Radiant Panel)	ASTM E 648-06	Heavy Traffic test (Walk test)	ASTM 6119-03
NBS Smoke Density (Flaming)	ASTM E 662-06	Sound transmission	ASTM C 423-17
Lightfastness	AATCC 16 E	Sound Absorption	ASTM C 423-17
Colour fastness to Ozone	AATCC 129	Static Loading	ISO 015/3415
Colour fastness to NO ₂	AATCC 164-2008	Green Carpet (VOC)	ASTM D 5116
Crocking Dry and Wet	AATCC 165-2008	Acoustic	BS EN ISO 354
Stain fastness	AATCC 175-2008/ITTS 002	Thermal Resistance	ASTM C 518

CARPET TILES ADVANTAGES

- Solution Dyed Nylon**: Icon of a spool of blue thread.
- Multiple Design Possibilities**: Icon of three overlapping colored squares.
- Ideal For Heavy Foot Traffic**: Icon of blue footprints.
- Stain Protect**: Icon of a red stain with a red 'X' over it.
- Offers Sound Absorption**: Icon of a shoe with sound waves below it.
- Reduce Waste During Installation**: Icon of a blue trash bin labeled 'WASTE'.
- 40% Lesser Environment Footprint**: Icon of a green globe with a leaf.
- Fade Resistant**: Icon of purple horizontal stripes with a white diagonal line.
- Less Lead Time**: Icon of a red clock face.
- Easy To Maintain**: Icon of two hands holding a gear.
- Easy To Install**: Icon of a green wrench and screwdriver.
- Made in India**: Icon of a blue lion with the text 'MAKE IN INDIA'.

CERTIFICATION

- U.S. Green Building Council (USGBC) LEED Gold
- GreenSource Building
- VERIFIED by ALL BUILDING SERVICES ENVIRONMENTAL PRODUCT DECLARATION
- GreenPro
- ZERO WASTE 91% Waste Diversion Achieved CERTIFIED by SCS Global Services
- CE
- CERTIFIED SUSTAINABILITY ASSESSMENT GREEN SOURCE NSF/ANSI 140 CARPET GOLD
- INSPIRING GREEN BUILDING PRACTICES SGBC
- OEKO-TEX® CONFIDENCE IN TEXTILES STANDARD 100
- OEKO-TEX® INSPIRING CONFIDENCE STeP
- ISO 9001:2015 CERTIFIED
- ISO 14001:2015 CERTIFIED
- ISO 45001:2018 CERTIFIED